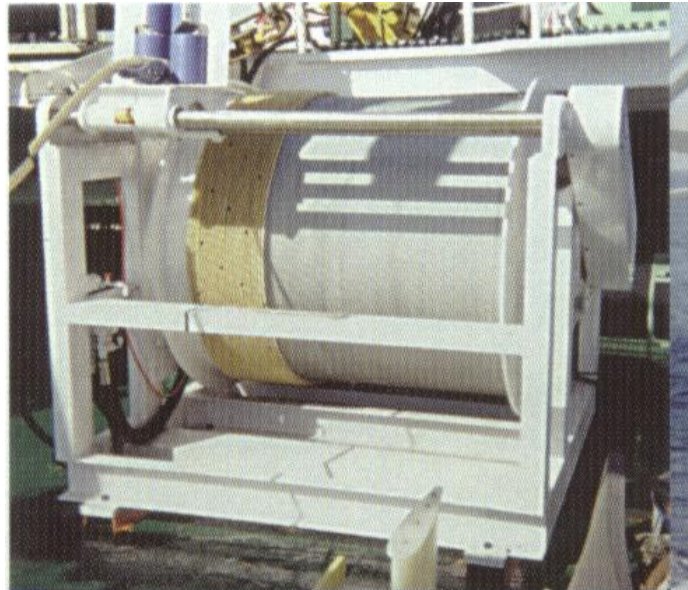




# SHUTTLE WINCH - HYDRAULIC

## MODEL NO. W1510-2 FAIRED CABLE WINCH



**Chelsea Technologies Group**  
55 Central Avenue  
West Molesey  
Surrey KT8 2QZ  
United Kingdom  
Tel: +44 (0)20 8481 9000  
Fax: +44 (0)20 8941 9319  
sales@chelsea.co.uk  
www.chelsea.co.uk

The winch is a single drum type, and is hydraulically powered via a separate power unit. The drum drive is taken from a combined hydraulic motor/brake unit, which drives a gear ring, which is attached to the winch drum. The outboard side of the drum is supported in a ball bearing unit and the drum includes a mounting for a multi-slip ring unit for connection of the cable via a terminal box.

A junction box is fitted to the side of the winch and accommodates the connections from the slip ring and the instrument display unit. The slip ring outlet is via a male connector LMPBH-8-MP suitable for the deck cable. The display outlet is via a 10-way panel socket 18-1S. The design of the winch allows for the motor/brake unit and the slip ring assembly to be mounted inside the drum barrel.

Positioned across the face of the drum is a roller type automatic spooling gear which is driven in unison with the drum rotation. The spooling gear assembly incorporates a Lebus type fairing elevator shoe which presents the fairing correctly for spooling onto the drum. This unit would be adjusted to suit the fixed angle of cable run to the hanging sheave assembly. The control of the winch is via a manually operated hydraulic valve which would be positioned at the winch to suit installation.

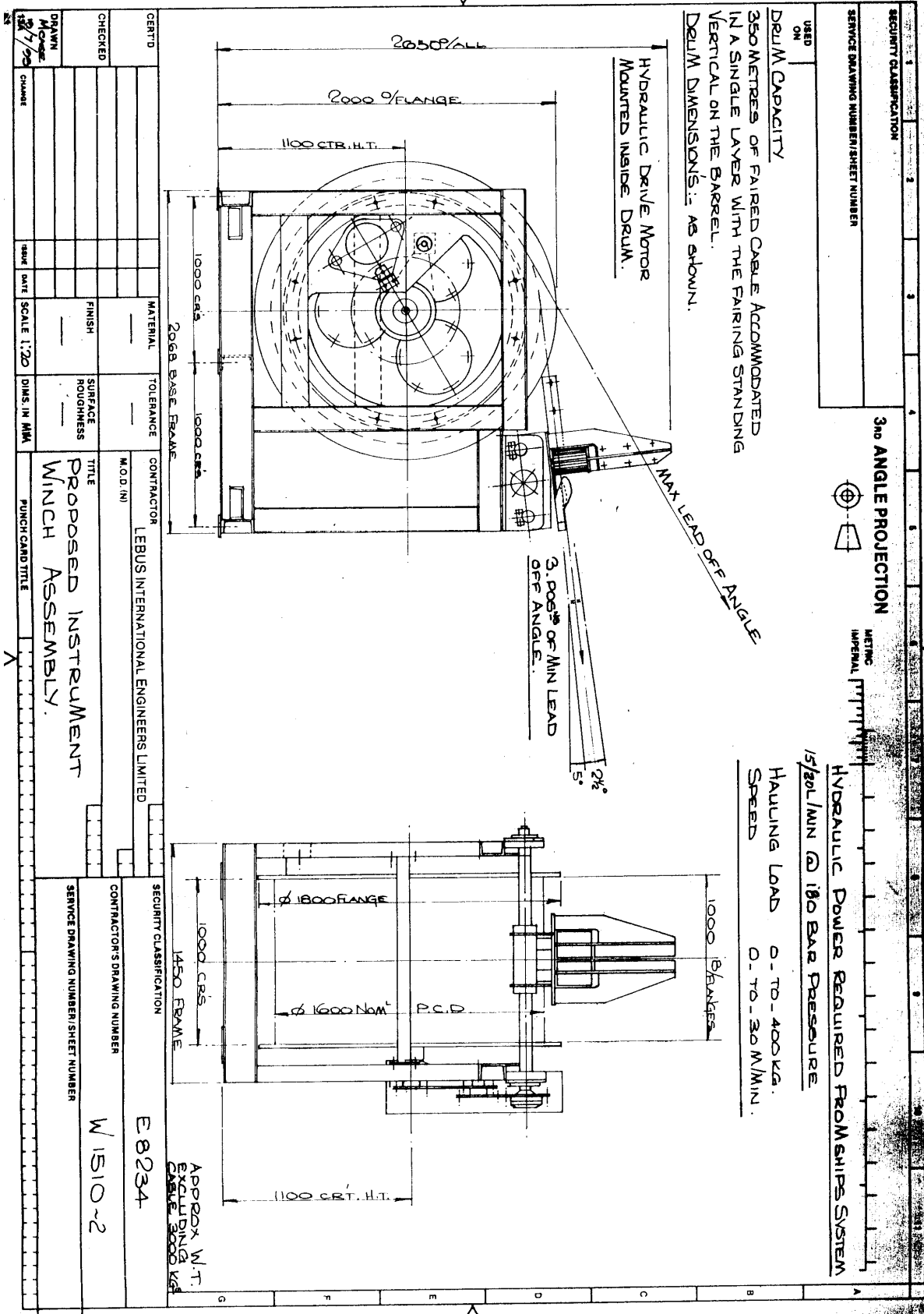
<b>Drum Capacity</b>	350m. of Rochester Cable with 150m. being faired with flexi-nose fairing cable accommodated in a single layer with the fairing standing vertical on the helically grooved barrel.
<b>Winch Performance</b>	Hauling loads 0 to 400 kgs. when ship is steaming at approx. 2 knots. Static towing loads 5 tonnes. Hauling and veering line speeds are infinitely variable from creep to 60m./min. The hydraulic supply required to enable the winch to obtain the stated performance is 20 litres/min. at 180 bar pressure.
<b>Optional Extra</b>	Line Speed, length and load display can be supplied for mounting locally or remotely.

*The whole winch is built to suit a marine environment with all chain drives suitable guarded and all steel work prepared and painted to suit a marine specification.*

<b>Overall Dimensions:</b>	2.2 x 1.45 x 2.65 metres (length x breadth x height)
<b>Approximate Weight:</b>	3000 kg excluding cable

# SHUTTLE WINCH - HYDRAULIC

## MODEL NO. W1510-2 - FAIRED CABLE WINCH



SECURITY CLASSIFICATION	
SERVICE DRAWING NUMBER/SHEET NUMBER	
CONTRACTOR	LEBUS INTERNATIONAL ENGINEERS LIMITED
MATERIAL	2008 BASE BRASS
TOLERANCE	
M.O.D. (N)	
CONTRACTOR'S DRAWING NUMBER	E 8234
CONTRACTOR'S DRAWING NUMBER	W 1510-2
SERVICE DRAWING NUMBER/SHEET NUMBER	
TITLE	PROPOSED INSTRUMENT WINCH ASSEMBLY.
PUNCH CARD TITLE	
DRAWN	15/7/95
CHECKED	
CERTD	